

# NOVEMBER 2023

The Booster Club is needing our help! Those willing to donate food items can do so by signing up at the Union State Bank or contacting Amber Krause or Sheila Wright.

For more info please visit the BV Boosters Facebook Page



## Olsburg Community PRIDE



We need to say an extra special thank you to

Donna Krause

She kept the flowers at the Olsburg Rock and "Ole" Dala looking beautiful all summer. Not an easy task – it was so dry!

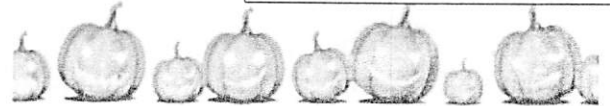
Thanks so much Donna for all your extra work!

THANK YOU!



And one more thank you to the Rick Gibbs Family for sharing their pumpkin and gourd harvest with the community!

Thanks so much – we all appreciate your generous donation to the Newsletter!



## MES Halloween Parade October 31

Students will leave MES at 2:00, parade around Olsburg and return back to school at 2:45. Please grab a lawn chair and enjoy the event.



Thanks!  
MES Staff

**Last month's question... Olsburg has a rich history in businesses during it's early years. We even had a horse track! Does anyone have any info or pictures of the area when the track was in business??**

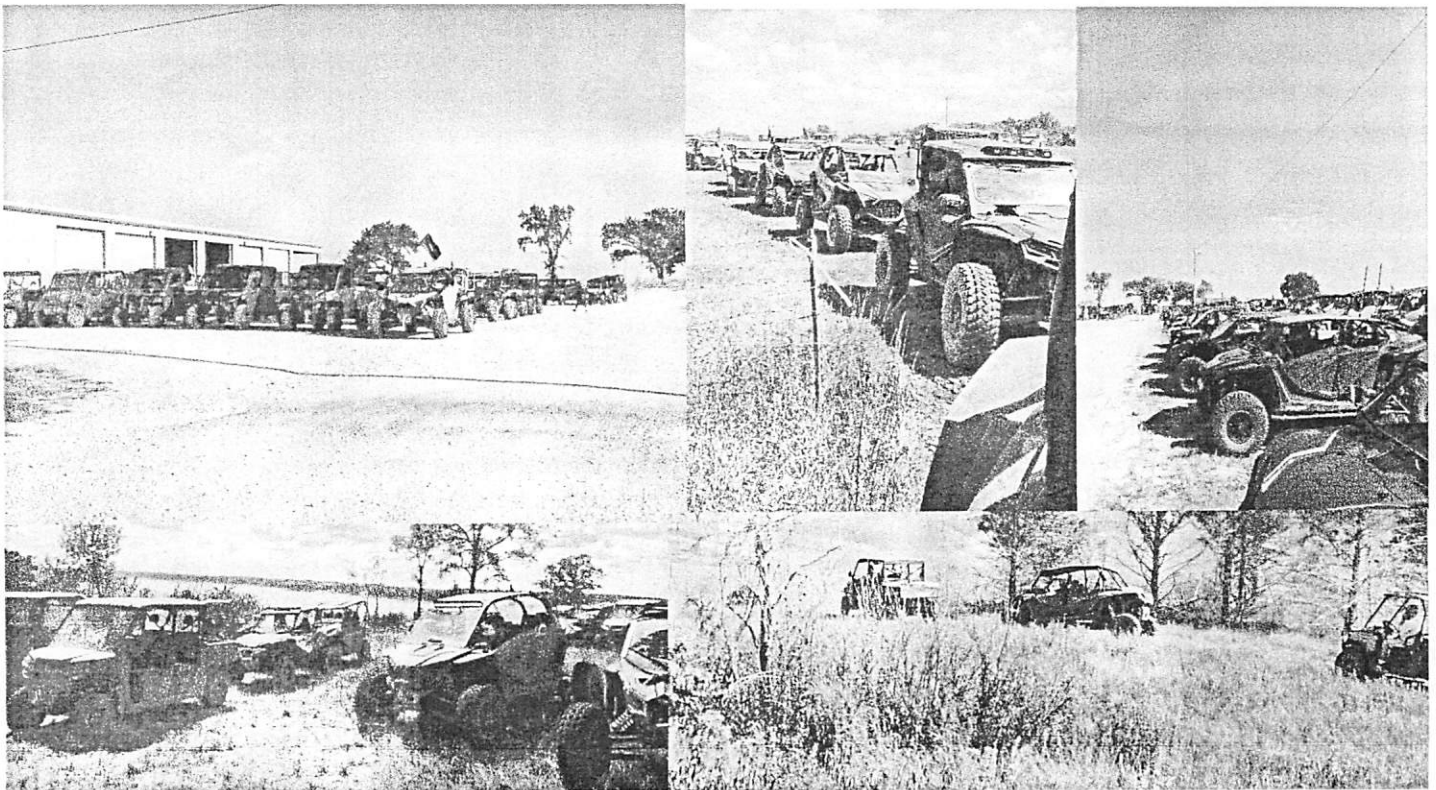
Taken from "A Centennial History of Olsburg Kansas": Another social event of a different sort was anxiously awaited each April, the Olsburg Horse Show. "This show is intended to bring together the best stock in the country and will be an interesting and profitable exhibition. Stockmen from all parts of the country are invited to exhibit their stallions, jacks, and colts at this show. Everybody is invited and those interested in breeding stock especially. It will undoubtedly draw one of the largest crowds to town that has been seen for some time. On that same day of the horse show, two purses will be offered for races. First race, free for all, best two and three, distance 80 rods, purse of \$10 to be divided into \$5, \$3, and \$2. Second race, open only to horses that have never been tracked, distance 60 rods, best two and three in every race, purse to be \$5 to be divided into \$2.50, \$1.50 and \$1, three to enter in each race." **Newsletter, March 31, 1887** The track was just West of town. The races alone were also held there on many Saturdays and there was a good deal of betting on the side on these occasions.

**Here is your new question... What remnants are still visible today of the LK&W Railroad that came through Olsburg. Where are they?**



## Olsburg Community PRIDE

On Saturday, September 16, 2023, the Olsburg Community PRIDE hosted its 7<sup>th</sup> Annual ATV/UTV Poker Run in Olsburg, Kansas. The poker run is put on by PRIDE members and volunteers to raise funds to help support the Olsburg community. The event consisted of around 50 miles of low maintenance backroads around the Olsburg area and around 12 miles of off road trails on private property. Before the ride, riders had a chance to grab a pizza and snacks from The Bricks for lunch and after the ride everyone was welcomed back to a catered dinner by The Farmhouse, Olsburg's two local restaurant. All the riders had a chance at over \$12,000 in door prizes and raffle items all which were donated by supporting businesses. The poker hands were judged and the winners walked away with cash and other prizes. This year we had 532 riders and around 250 ATV/SXS. With this many off road machines on display, it's an incredible sight to see. Of the 532 riders that attended from 6 different states there were 56 kids and 349 adults. 404 were from all over Kansas, 54 from Nebraska, 26 from Missouri, 5 from Iowa, and 5 from Minnesota and 1 from New York. Over \$35,000 in cash and prizes were raised for the Olsburg Community PRIDE and profited roughly \$23,000. A huge "Thank You" to everyone that made the drive to see us and all the volunteers that made the event run smoothly. The community's support of the event is greatly appreciated! We look forward to seeing you next year in September! For more information about the Olsburg Land Utfärd look us up on Facebook.



# 4-H Garage Sale

## November 3-4

Wreath Barn, Cico Park, Manhattan

**We are looking for a huge selection of items  
to be donated.**

**We do not accept TVs of any kind.**

**Proceeds benefit 4-H members in Pottawatomie, Riley,  
& Wabaunsee Counties**

## Drop Off Items on Location

**Wednesday, November 1, 5-8 PM**

**Thursday, November 2, 10 AM - 8 PM**

## Garage Sale

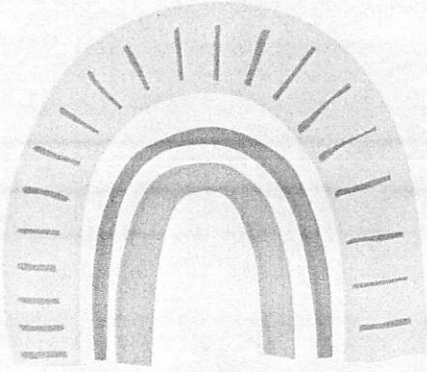
**Friday, November 3, 9 AM - 8 PM**

**Saturday, November 4, 8 AM - Noon**

**Questions: Call John Jobe, 785-537-6350**







# Olsburg Boosters 4-H Club



## 4-H NEWS

Our last meeting was on October 1, 2023 at the Alert Church. We participated in 4-H Sunday.

For National 4-H Week, members colored pictures which are on display at Union State Bank. Stop by and check them out.

## TODO

- ✓ 4-H enrollment at [v2.4honline.com](https://v2.4honline.com)
- ✓ Sign up for committees, project talks and refreshments
- ✓ Drop off donations for 4-H garage sale

## REMINDERS

- ✓ Online enrollment is open for 4-H members and volunteers
- ✓ Our next meeting will be on November 5, 2023 and will start at 6:00 at the Olsburg American Legion

## EVENTS

### October 22

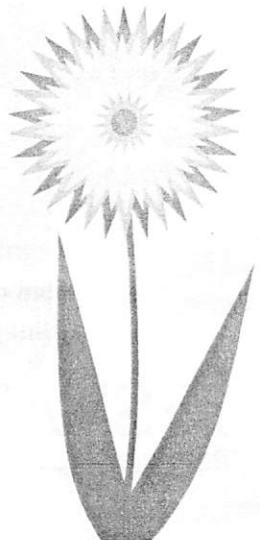
County Achievement Awards Banquet

### October 29

Officers training

### November 1-4

4-H Garage Sale



Hello neighbors, it has been an honor to serve on the Bue Valley School Board for the past eight years. I am proud of the work done to solidify BV's

future and to provide increased wages for the teachers and staff while remembering our funding is not free – it comes from the hard work of our community, and it must be used wisely. As a board member, I will continue to support the importance of learning, fiscal responsibility, and a positive school culture.



My name will not appear on the upcoming ballot. If you would like me to continue serving, please write in my name for USD 384 School Board Member District 3 position 3.

✂

|  |
|--|
| USD 384  |
| For School Board Member<br>District 3 Position 3 |
| Vote for One                                     |
| <input checked="" type="radio"/> Stephen Corkill |
| or write-in                                      |
| School Offices                                   |

Thank you for your vote. Stephen Corkill



OLSBURG LUTHERAN CHURCH

# FALL FESTIVAL

4PM | OCT 22 | 2023

PUMPKIN PAINTING (PUMPKINS PROVIDED) | HAY

RIDES | CHILI CONTEST |

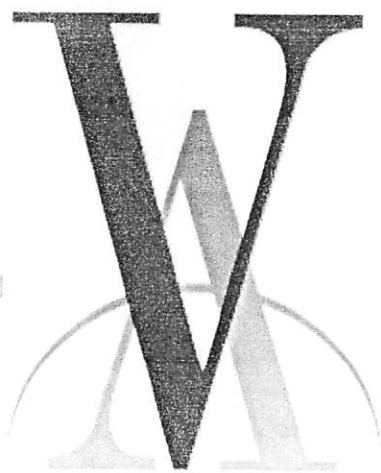
RAFFLE | CASH PRIZES

**FREE Admission and Supper**

**Location: Nelson's Family Farm**

**17690 Shannon Creek Rd, Olsburg, KS 66520**





VARNEY  
& ASSOCIATES, CPAs, LLC



4 – Daryl & Gay Youngman  
15 – Joe & Staci LeBlanc  
27 – Sam & Elizabeth Williams  
27 – Brett & Jen Sump

# CELEBRATE!

Want to be added to the birthday  
or anniversary list? Please email  
[jncw@twainvalley.net](mailto:jncw@twainvalley.net) or text  
or call Tami @ 785-556-3557

# Happy Birthday

- 1 Lois Hellebust
- 2 Alan Hubbard  
Casey Nelson
- 3 Joyce Cantrell
- 4 Mark Fronce  
Jennifer Sump
- 7 Danny Williams  
Matt Schreiber
- 8 Bobbi Jean Mills
- 9 Dakota Krause
- 10 Jackie Cassel
- 12 Eve Corkill
- 13 Connie Larson  
Glynda Byarlay
- 14 Sandy Hageman
- 15 Dan Dodge
- 18 John Hageman  
Luellen Kasselmann  
Ethan Hardesty
- 22 Brynlee Webster
- 23 Lauri Johnson
- 24 Kyle Clifton  
Shanna Plummer  
Connie Fagerberg  
Genesis Johnson
- 25 Karl Kasselmann
- 26 Tammi Budenbender
- 27 Mary Nelson
- 28 Katie Geiger
- 29 Acelynn Willis



"As you get older,  
three things happen:  
The first is  
your memory goes,  
and I can't remember  
the other two."

— NORMAN WISDOM





brings you another

# Community CHALLENGE

Community Challengers

*Herb and Chris Loveless*

**challenge the BV Community to raise \$5,000!**

Herb and Chris will match it dollar for dollar!

*Help us rise to the challenge!*

All proceeds from the Community Giving Challenge will be used for the renovation cost of the baseball/softball fields in Randolph.

Donate  
online!



## HOW TO DONATE

Donate online or in Randolph or Olsburg at Union State Bank!

Make checks payable to Big Blue Dream Fund





**Sports Pub, Pizza & Grill**  
**Carry-Out 785-468-3517**  
**Tues – Sat 3pm - Close**  
**Kitchen hours 3 - 9 pm**

**Buck Creek - Sat October 28th 8-Midnight**  
**Halloween Costume Contest**  
**(Outdoors weather permitting)**

**Looking to add to our team**  
**Full/Time Prep Cook Needed**  
**Tues - Sat**  
**1:30-930 shifts**  
**Off Sunday & Monday**  
**\$13 hr start.**  
**Message for more info or**  
**Apply within.**

**Call Darren to schedule future events**  
**and large party orders**

**Bartenders and Servers needed!**

**Thanks for all your support!!**

**Follow us on FB for Daily Specials or [www.thebrickssks.com](http://www.thebrickssks.com)**  
**Due to increasing costs menu prices are subject to change.**

# GLAVAN FORD

*of Clay Center*

JUSTIN RICKETTS  
Sales Consultant

[j.ricketts@glavenfordofclaycenter.com](mailto:j.ricketts@glavenfordofclaycenter.com)  
[www.glavenfordofcc.com](http://www.glavenfordofcc.com)

Business: 785-632-2112  
Cell: 785-770-7473  
Toll Free: 800-794-4010



- Restoration and Sales of Vintage Sewing Machines
- Service and Repair
- Programs on the History of Sewing Machines
- Quilting Workshops
- Sales of Quilting Tools, Templates and Specialty Items
- Authorized Retailer for Westalee Design and Sew Steady Products

Gay & Daryl Youngman [justsewvintage@twinklvalley.net](mailto:justsewvintage@twinklvalley.net) 785-313-0718



## Union State Bank

OLSBURG, KANSAS 66520

Member  
FDIC

204 E Highway 16  
785-468-3341



Proud to be your Hometown Bank.  
Here to Serve You  
Yesterday – Today & Tomorrow

The Olsburg United Methodist Church  
invites you to be a  
part of the spiritual  
revival going on in  
our country. Our  
Sunday service  
begins at 8:00 am.  
Participate in the joy of church worship!



We also offer public meeting space with  
kitchen amenities. Call Donna for details  
at 785 770 2335.

## SUNFLOWER STORAGE

204 INDUSTRIAL DRIVE, OLSBURG, KS

8' x 20' units are rodent and weather resistant.

\$65/month and a \$65 deposit to start

No minimum length of time to rent.

785-564-1450 785-565-2652  
Jeannie Terry

### JOHNSON SEED SALES

16460 Green Randolph Rd  
Green KS 67447

785-944-3593

Stan: 785-632-1019

Seth: 785-632-4494

Corn, Soybeans, Milo, Wheat, RR Alfalfa  
And All Cover Crops

### MORE THAN JUST A SUMMER CAMP

FHFTC is more than a camping experience. It is more than getting together for a fun or educational outing. The goal of the FHFTC is to provide a place where foster teens are safe and can relax from the stress of their uncertain lives while experiencing activities that allow them to be kids, to build trust, and to give them HOPE.

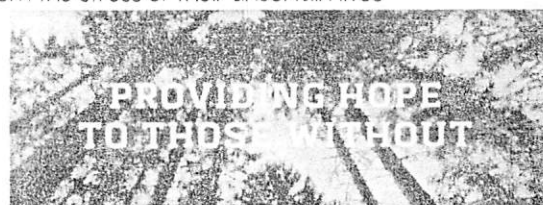
(785) 410-2995

[director@fhftc.org](mailto:director@fhftc.org)

4122 Living Water Rd

Olsburg, KS 66520

FHFTC is proud to partner with Living Water Ranch to host and support our events and camps.



FLINT HILLS  
**FOSTER** *Teen*  
CAMPS



\*\*\*\*\*  
**EVERYONE COME JOIN THE  
FUN!**

# TRUNK OR TREAT

Decorate your vehicle's trunk, load up on candy to give the kiddos, wear a costume (optional), channel your inner prankster and have a great time!!

**SATURDAY  
OCT 28**

**6:00 to  
7:30 PM**



**300 BLOCK OF 2ND STREET, OLSBURG**  
Hosted by Olsburg Education Club





**AC AUTOMOTIVE**

ARIC CASSEL

PHONE 785-564-3607

ARICCASSEL@HOTMAIL.COM

124 3<sup>rd</sup> Street  
Olsburg KS 66520  
785-564-3607

- General Maintenance
- Engine/Transmission repair or replacement
- Brake Work
- Front-End Work
- Engine Performance Diagnostics
- A/C Work



**Blue Valley Electric  
& Building Supply Co.**

300 4<sup>th</sup> Street  
Olsburg KS 785-468-3570

## DEEP WELL VETERINARY SERVICE

Large and Small Animal Care

Dr Ann Buchanan, DVM  
Dr. Kotie White, DVM  
8355 Highway 16  
Olsburg KS 66520  
785-457-2128



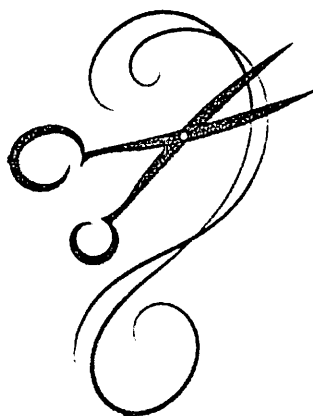
Appointments Available  
Monday-Friday

8-5

Saturday

12-4 pm

Emergency Services Provided



Linda's First Street Salon  
Linda Kasselmann, Owner/Stylist

605 N 1<sup>st</sup> Street  
Olsburg KS 66520  
Please Call  
785-313-1371 or 785-468-2001

Open Weeknights 5-8 and Saturdays 8-5  
(By Appointment Only)  
Cash, Check and Credit Cards Accepted  
I Look Forward to Seeing YOU!

Salon Services Include:  
HAIRCUTS FOR MEN, WOMEN & CHILDREN \* FOIL  
HIGHLIGHTING \* COLOR \* PERMS \* WAXING



**D&M HVAC**

New Construction - Service - Installation  
785-340-2895 - 785-323-7105



*The perfect complement to your special moments for  
more than 50 years*  
Come in and experience Danenberg.

Our showroom is located in historic downtown  
Manhattan at  
425 Poyntz Avenue

Appointments available for a personalized visit with  
one of our jewelry experts  
Showroom Hours  
Monday-Saturday  
930am - 530pm

Give us a call or send us an email anytime  
785-776-7821

diamonds@djeweler.com

**THE FARMHOUSE**  
in Olsburg

785-468-3511

## **City of Olsburg, Regular Meeting Summary, October 3, 2023**

### **Call to Order**

Seeing there was a quorum present to conduct business, the special meeting of the Olsburg City Council was called to order by Mayor Aric Cassel at 7:03 pm.

Present were Mayor Aric Cassel, Council Members Mike Mayer, Cindy Pfaff and David Gibson. Also present were City Treasurer Gregg Gibson and City Clerk Jeannie Johnson. Absent were Council Members Mike Krause and Karl Kasselmann

### **Public Comment:**

**Approve Minutes:** All minutes from August and September meetings were approved.

**Treasurer Report:** Treasurer's report and payment of bills were approved as presented.

**Clerk Report:** An overview of the past month's activities regarding the day-to-day operations of the City.

### **Council member Reports:**

**Street** - Cindy Pfaff – Another load of cold mix has been delivered.

**Water**- Mike Mayer – Asked the Clerk to make a list of areas where street repairs need to be made.

**Parks** - David Gibson – Benches need to be assembled and installed for the walking trail.

### **Old Business:**

- a. Fireworks Ordinance NO. 383 – Was approved and will be posted on the city website.
- b. Reviewed and Approved the Amendment to Preliminary Engineering Agreement – To add KDHE State Revolving Fund (SRF) consultant provisions to the City's contract with Schwab-Eaton.
- c. Reviewed and Approved the Design Engineering Agreement – Protects the City in the event funding for the lagoon project was to fall through.
- d. Reviewed and Approved the Administrative Service Agreement with Ranson Financial – The agreement is for services provided by Ranson Financial for loan administration for the lagoon project in the sum of \$20,000.00.
- e. Reviewed Preliminary Engineering Report on sewer lagoons.

### **New Business:**

- a. Annual Review of the City of Olsburg Emergency Water Plan – Mayor Cassel and Water Superintendent Mayer reviewed contact information changes and signed the EWP.
- b. City Property – There is a very small triangle of city property the Council is considering transferring for other purposes. The Clerk will contact City Attorney Irvine for advice on next steps.

## Text Messaging Service For Olsburg Residents

The City offers a text messaging service for resident subscribers. The text message service will give the City flexibility to notify residents when the water tower is closed for maintenance, reminders of changes in the trash pickup schedule, etc. Text messages are limited to 160 characters including spaces.

The service is available now! All you need to do is complete the form below and return it to City Hall or drop it off in the bill payment dropbox.

-----  
Opt in for the City of Olsburg text messaging service!

Date \_\_\_\_\_

Name (Please print): \_\_\_\_\_

Cell Phone Number to receive text messages: \_\_\_\_\_

Address: \_\_\_\_\_

Subscriber Signature: \_\_\_\_\_

By submitting this form, you agree to opt in for the City of Olsburg text messaging service and agree to the terms and conditions of the text message service. If you have questions, please call City Hall 785-468-3209

## Reminder: You can pay your utility bills online!

Access to pay utility bills or camping fees online is easier than ever!

Avoid late utility bills payments! Scan the QR code – it will take you directly to the KanPay (NICUSA) website. Enter your information (remember to include your account number!), click Submit and you're done!



There is a 2.5% convenience fee for using this service. Please remember it takes 3-5 days for your payment to process through the system and credited to your account!



**CITY  
COUNCIL**



## Fall Elections To Be Held Tuesday, November 7th

The November elections will soon be here. Current Council Members David Gibson and Karl Kasselmann have filed to be on the ballot, leaving one seat open.

*Any interested residents of Olsburg who would like to run for the open seat, can do so through a write-in campaign.*

Eligible candidates must be 21 years of age, must be a resident of the City of Olsburg and must be a registered voter. Each term is four years.

For more information, please contact Jeannie at the Olsburg City Hall, 785-468-3209 or Ashley at the County Clerk's office, 785-457-3314.





BUNKHOUSE QUILTS

Innova Longarm Sales

&

Quilting Services

Laura 785.293.5234

LuAnn 785.293.4424

Let us help you  
finish your quilts!



## BEEF GENETICS

Galen and Lori Fink  
15523 Tuttle Creek Blvd.  
Randolph, KS 66554

CELL 785-532-9936



*Flinthills Family  
Chiropractic, LLC*

**Dr. Jessica Campbell, DC**

*Chiropractic – Acupuncture  
Wellness for the whole family.*

Now serving 2 locations:

East: 8200 Southport Dr. Ste 106

M-W-F: 8-6

West: 511 Richards Dr. (inside  
785 Athletics)

T-Th: 9-6

Saturdays: By Appointment  
Call **785-320-6791** to schedule  
your appointment

Or book online

[www.flinthillsfamilychiropractic.com](http://www.flinthillsfamilychiropractic.com)



**LEO FINAN**  
**20895 Highway 99**  
**Blaine KS 66549**  
**785-456-4277**



**CAR CREATIONS**

Applique Towels  
for Any Occasion

Charlotte Braddock

**785-477-4040**



## JOHNSON EXCAVATION

31 years of Experience ready to serve you!

Terry L Johnson, Owner

785-565-2652 (C) or 785-468-3663 (H)

20705 Shannon Creek Road, Olsburg, KS 66520

Call for a courtesy estimate!!

953 Caterpillar Front End Loader, 236B Skid Steer,  
Dirt Work, Gravel Hauling, Tree Shearing,  
Trenching, Custom Haying, Custom Planting



Traditions Beauty Shop  
&

Bittersweet Lane  
Candles & Gifts

Cards, Candles, Jewelry and Gift Items



Open Tuesday Through Saturday  
785-468-3344



Water lines, sewers,  
livestock waterers, dirt  
work, spring tanks,  
water leaks, lagoons,  
standard septic systems,  
building pads, footings  
and much more.

**Please Call: JACOB  
BRENNER**

**785-313-0983**

## SUDBECK PAINTING

Residential or  
Commercial

WE GO ANYWHERE

CALL JEFF AT  
443-803-8900 OR  
785-468-3214

## FLINT HILLS COWBOY CHURCH

10465 ELIZAS RD., ST. GEORGE, KS 66535

SUNDAY SERVICE 10:00 A.M.

WEDNESDAY BIBLE STUDY 6:30 P.M.

**PASTOR CHUCK ASBURY**

785-844-0859



**BUY LOCAL**

Discover

**66549**

Westmoreland KS



**Antique Shops, Art, Museum,  
Market & So Much More**

Oregon Trail, Hand-Dug Well, RV Park, Pott Lake #1,  
Historic Pottawatomie County Courthouse, & an  
Old Fashion Soda Fountain

**OLD MIND DESIGNS  
GALLERY**

(Because most of my art comes from my  
old mind!)

**301 Main St.**

**Westmoreland, Ks. 66549**

**785-458-2364**

**Tues-Fri 10-5, Sat 10-4**

**Linda Ross Asbury**

[www.facebook.com/oldminddesigns](http://www.facebook.com/oldminddesigns)

**Westmoreland**

HOMETOWN MARKET

To Quality Meats,  
Veggies, Fruits,  
Bakery Fresh Sweets  
and Breads.

Salad bar available Monday  
through Friday 11am - 6pm

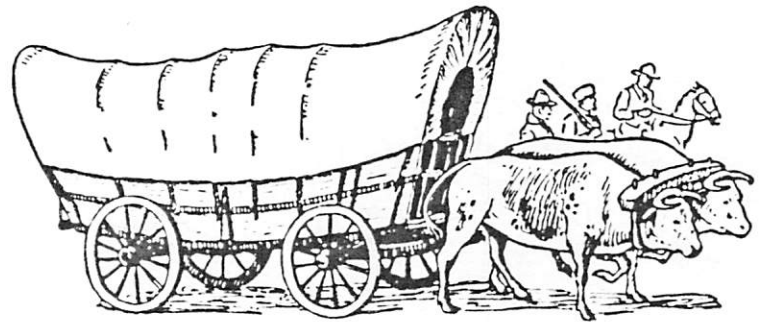


**Featuring  
Yoder Meats,  
Bowser Meats,  
Beachy's  
Produce**

HOURS:

Monday - Friday, 10am-7pm  
Saturday, 8am-6pm / Sunday, 10am-4pm

314 MAIN  
WESTMORELAND KANSAS  
785-457-0101



**Wellsprings  
of  
Westmoreland**

105 N. Hwy 99  
Westmoreland, KS 66549

Formerly known as Westy Community Care Home -  
Same great company and service since 1975!

**Long-Term Care**

- Medicare & Medicaid Certified
- Long-Term Care
- Adult Day Care
- Memory Care/Alzheimer's Unit
- Inpatient/Outpatient Therapy
- Respite Care
- Home Meal Delivery Services

**Assisted Living**

- 3 Meals Per Day
- Laundry Services
- Weekly Housekeeping
- Walk-In Closets
- Additional Accommodations Available
- Life Enhancing Activities
- Competitive Rates

Contact Michelle Rifford, Administrator, for more details • 785-457-2801



# A TALE OF TWO COURTHOUSES

## PART 1

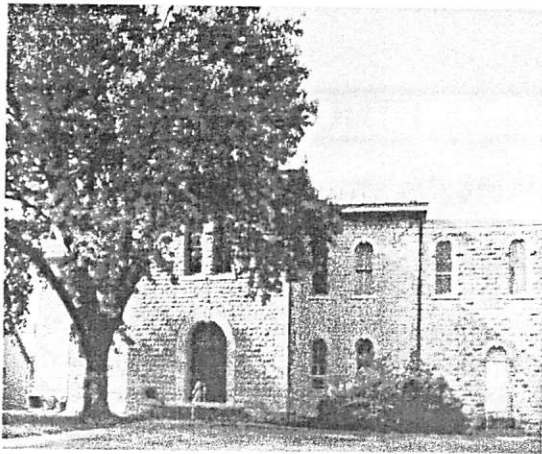
To quote Paul E. Wilson, Kane Professor of Law, University of Kansas in Legacies: Kansas' Older County Courthouses:

For some of us the nostalgic appeal of old courthouses goes a long way toward justifying preservation. But the practical economics of county government require that there be better reasons. As construction costs rise and the need for conserving society's resources becomes increasingly apparent, the continued use of sturdy, durable old buildings seem highly practicable. Remodeling to utilize unused space or augmentation with new facilities may be possible answers. If use for judicial or governmental purposes is no longer feasible, adaption to other appropriate uses might serve a public need. It should never be forgotten that the courthouse is more than any other, a place where local history has been made. The community owes it to its traditions, its history, itself, and to future generations that it not demolish its courthouse preemptorily.

Citizens for Courthouse Conservation was established in 2017 for the purpose of providing public education on the value of saving the historic Pottawatomie County Courthouse and to support potential conservation and restoration. To this end we are presenting a two-part installment comparing us to another county in Kansas, (Miami) with an historic courthouse and how actions by commissioners in these two counties differ. We also want to present additional information to taxpayers that you may not be aware of.

- Miami County Commissioners have a plan and desire to fund the renovation of their courthouse for continued use.
- Pottawatomie County Commissioners have delayed for 6 years any strategic plan to renovate their historic courthouse for continued use.
- In the past commissioners in Pottawatomie County have stated they do not want to put this decision to the voters because including it on a ballot is too expensive.
- Commissioners have publicly stated that funding is not available when in fact over \$70 million in unassigned Pottawatomie County taxpayer money is being held in CDs and other bank funds.
- Renovation to use the existing historic courthouse would not cost additional taxpayer money.
- Funding for a renovation (estimated in the studies, of approximately \$5M) can be funded through grants and up to 40% in tax credits that can be sold to pay for renovations bringing the cost down to approximately \$3M which can be paid for with existing funds on deposit. Estimates are just that, and may change upward but still affordable.
- Additional space is a concern for more than one activity in the county.
- A recent 3-phase study has been completed and presented to the county commissioners and to date no action has been taken to discuss this study and its recommendations.





**Pottawatomie County Courthouse**

**Built:** 1884, Cost: \$10,000  
**Building Additions (5)** \$228,269

**Architect:** None

**Architectural Design:** Italianate

**Building Material:** Native Limestone

**National Register of  
 Historic Places:** 2018

**Commissioners:** 3  
 Increases to 5 Nov. 2024

**County Population:** 23,298

**County Square Miles:** 862

**County Annual Budget:**  
 General \$39,337,203  
 Additions \$ 5,363,102  
 Total County-Wide \$44,700,305



**Miami County Courthouse**

**Built:** 1898, Cost: \$66,152  
 Renovated in 1970s for \$500,000

**Architect:** George P. Washburn  
 Designed 13 courthouses in Kansas

**Architectural Design:** Romanesque

**Building Material:** Carthage Limestone  
 Foundation and Pressed Red Brick

**National Register of  
 Historic Places:** 1973

**Commissioners:** 5

**County Population:** 34,471

**County Square Miles:** 576

**County Annual Budget:**  
 General \$38,502,786  
 Additions \$ 5,472,939  
 Total County-Wide \$43,975,725

The two Kansas courthouses pictured here weave a similar story from their modest beginnings in the late 1800s to today. Both have undergone additions and/or updates through the years to meet the demands of the people they serve. Both have been in use from the time of construction until

today. The last date of significant use for the Pottawatomie County Courthouse was 2021. Both have earned a place in the National Register of Historic Places, recognizing their historical importance and service to generations of Kansans.

Joseph W. Snell in his book: Legacies: Kansas' Older County Courthouses, reminds us that ***"county seats were prized possessions which set one town above its peers...city and county residents took pride in the building that represented county government—the courthouse."***

The fate of these two magnificent courthouses diverges into two very different directions of what is to become of them for future generations. County commissioners are stewards of all county property in their respective counties in Kansas. Maintenance, upkeep, use and/or preservation of county property lies in their hands.

In Miami County, commissioners have long been vocal about the need to renovate and repair the historic Miami County Courthouse as well as build additional courtroom space. Funding for the project will be decided by voters in the upcoming November 7, 2023 general election. The question is this: "Shall a retailers' sales tax in the amount of one-quarter of one percent be levied in Miami County, Kansas with revenue from the tax used to fund (1) construction of a new building to house additional courtrooms and related activities, and (2) improvements and renovations of the historic Miami County Courthouse, and all things necessary and related thereto." An article in the August 30, 2023, Miami County Republic by Brian McCauley goes on to suggest that a goal of Miami County is to concentrate county business including judicial affairs into a centrally located complex. Results of the coming ballot question will be one step closer in determining if such a project is funded through tax dollars or a reliance on potential property taxes. However that question is answered, it is evident that Miami County Commissioners are steadfast in their efforts to maintain and renovate their historic courthouse.

In Pottawatomie County the future of preservation and use of the historic county courthouse is much more in doubt. Our group, Citizens for Courthouse Conservation, has closely followed statements and activities by commissioners related to the Pottawatomie County Courthouse. Most notable is a lack of maintenance, indecision of how the building could be used, and no serious discussions concerning its future. It is stunning to us that elected officials have singularly placed the financial concern as the sole determining factor and cavalierly suggested destruction of a critical and significant piece of our history. Can we believe they have our best interests in mind or are they simply reluctant to have their name forever linked to said destruction?

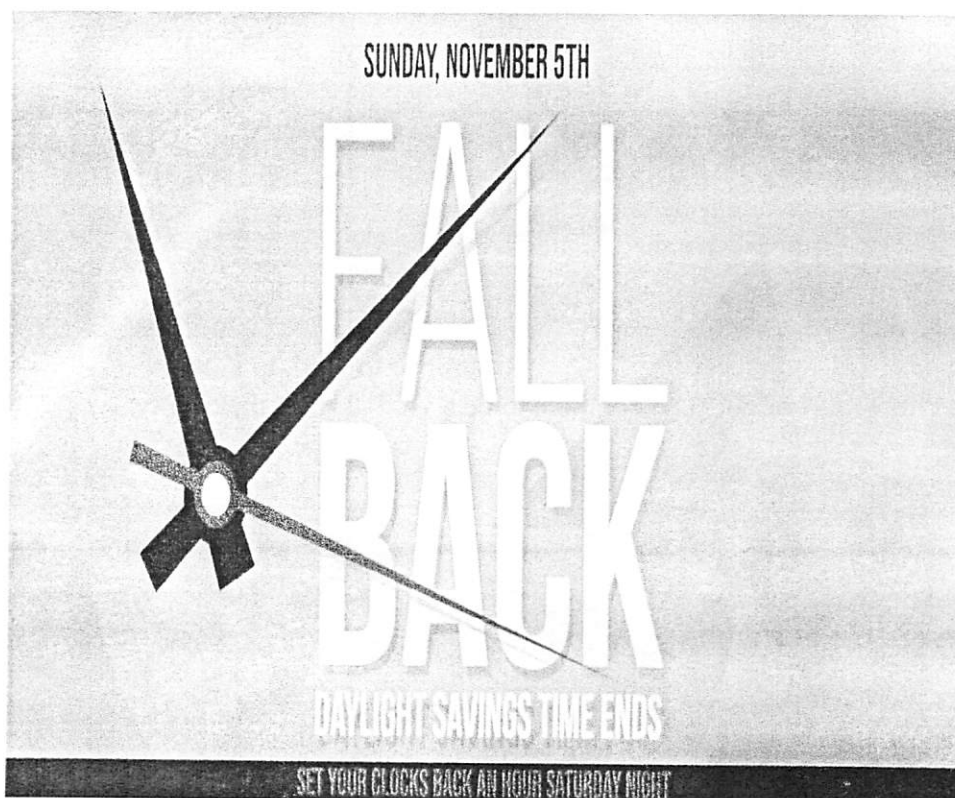
Thankfully, the building still stands. This organization, CCC, will continue to work to keep the taxpayers of the county aware of how this building can continue to be a vital asset to the county.

See Part 2, a continuation of this story.

Olsburg Community Pride Inc.  
PO Box 67  
Olsburg KS 66520

PRSRT-STD  
US POSTAGE PAID  
OLSBURG KS  
PERMIT #8

POSTAL PATRON



Lots of fun  
Fall activities!  
Hope to see you  
all "out & about!"  
- 9/43  
Tami